

Dawn of New Drives and Automation Systems by Japanese Technology



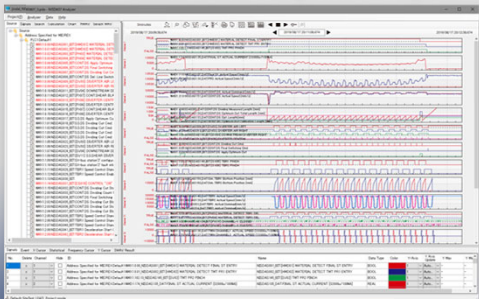
World Class Systems & Solutions



DC Drive System
MULTISPEED MS-18

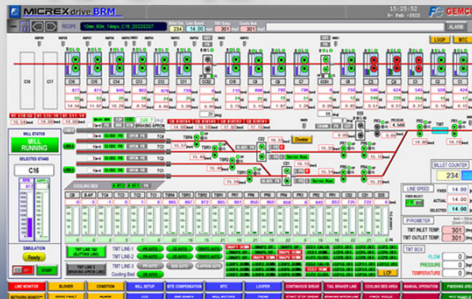
AC Drive System
MULTISPEED MS-VG

f(s)NISDAS 7
Fuji Process Data Acquisition System



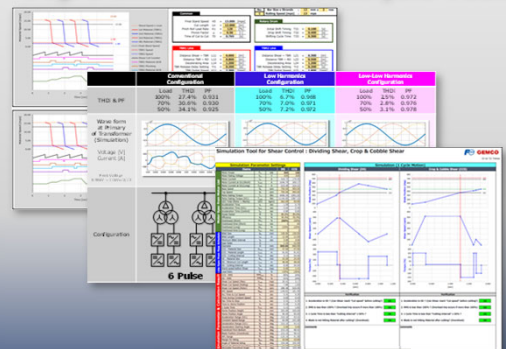
Traceability

MICREXdrive BRM
Fuji Bar Rolling Mill Control System



High Performance

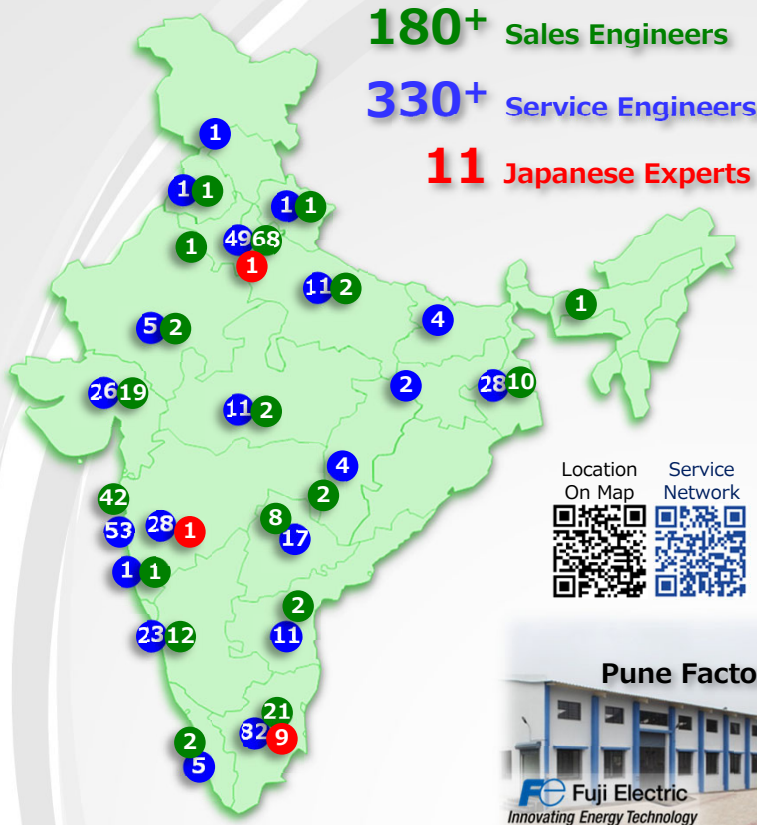
Fuji's Simulations & Analysis Tech.



Reliability

FUJI GEMCO PRIVATE LIMITED, INDIA
JVC OF FUJI ELECTRIC CO. LTD, JAPAN

■ Sales & Service Network of Fuji Electric Group in India



■ FGEM has over **1000+** systems operating Worldwide



- | | |
|-----------------|-----------------|
| 1. NIGERIA | 17. IRAN |
| 2. MALAYSIA | 18. BANGLADESH |
| 3. NEPAL | 19. ITALY |
| 4. JORDAN | 20. PRAGUE |
| 5. SYRIA | 21. VIETNAM |
| 6. DUBAI | 22. KOREA |
| 7. BAHRAIN | 23. CAMEROON |
| 8. SAUDI ARABIA | 24. IVORY COAST |
| 9. USBEKISTAN | 25. ZAMBIA |
| 10. GUINEA | 26. SRILANKA |
| 11. INDONESIA | 27. ANGOLA |
| 12. GREECE | 28. ARGENTINA |
| 13. KUWAIT | 29. PAKISTAN |
| 14. CHINA | 30. AFGHANISTAN |
| 15. KENYA | 31. IRAQ |
| 16. RUSSIA | 32. UGANDA |



■ FUJI GEMCO PRIVATE LIMITED

14/3 Mathura Road, Faridabad 121003
 NCR Delhi, INDIA

Phones: +91 0129 2274831, 2274832

Fax: +91 0129 2271477

Website: www.fujigemco.com

Email: fgpl-contact@fujigemco.com

contact@gemcocontrols.com

